



PROJECTWISE – IMPLEMENTATION

MT. VIEW CORRIDOR PROJECT EXTERNAL PROJECTWISE V8I INSTALLS

FOR NON-HDR PROJECTWISE USERS
MARCH 10

CONTENTS

Installation and use of ProjectWise V8i 3

Introduction 3

 Prior to installing ProjectWise Software..... 4

 Quick Start Guide..... 5

 Installation Procedure 6

 Connecting to HDR Hosted ProjectWise Datasources..... 8

 Identifying Mt. View Corridor Project Datasource 9

INSTALLATION AND USE OF PROJECTWISE V8I

Note: This document is directed to administrative-level users and IT-support staff, and assumes you have administrative privilege to install or remove software on your computer.

If you do not have that level of privilege on your computer, please contact your local computer support staff to obtain assistance with this installation.

If you have an administrator's account and need assistance you should first contact your local IT support staff for assistance, then contact HDR IS Support at (800) 776-8007 or (402) 392-8777 for assistance.

This document assumes that ProjectWise will only be used to access files hosted within HDR's environment and does not address the following:

1. Pre-V8i configurations.
2. Configurations of ProjectWise with other firms.
3. Operating systems other than Microsoft Windows XP

If you have a need to address the above conditions please contact the HDR IS Support center for assistance.

INTRODUCTION

HDR has upgraded their ProjectWise system to version 08.11.07.133. This version of ProjectWise includes some performance enhancements as well as bug fixes. Most notably, this version of ProjectWise integrates Delta File Transfer and data compression features to improve performance.

Please review and understand this document before installing or upgrading your ProjectWise software.

PRIOR TO INSTALLING PROJECTWISE SOFTWARE

IMPORTANT: If you already have another version of ProjectWise installed on your machine and you require its use for the I-15 CORE Project or another non-HDR ProjectWise system, you will need to create an isolated installation location for ProjectWise V8i. Create a ProjectWise_V8i folder in the installation dialog when prompted to specify the installation location. If you no longer require the use of an existing version of ProjectWise, uninstall the existing version prior to installing ProjectWise V8i.

Before installing the ProjectWise client software, make sure that any Autodesk or MicroStation CAD applications that you will be using are installed on the computer. This will ensure that the programs will be properly integrated with ProjectWise. If the integration is properly installed and configured you will be able to read and write MicroStation or AutoCAD files directly from ProjectWise rather than having to copy files in and out manually. This is the most desirable way to use ProjectWise as it greatly simplifies the coordination of documents between the various team members that are collaborating on your project.

Preparation for Installation

Before proceeding, it is advisable to create a Windows System Restore Point. To create a Restore Point, use the System Restore utility supplied with Microsoft Windows. If you are unsure how to proceed, first contact your local IT support person. If you need further assistance, contact the HDR IS Support Center.

QUICK START GUIDE

1. Installation
 - a. Ensure all Autodesk and/or MicroStation CAD applications are installed on the machine before installing ProjectWise. This will ensure that the programs will be properly integrated with ProjectWise.
 - b. Click the ProjectWise Explorer V8i link from the HDR ProjectWise website and save the **pwxplore.zip** file to your Desktop.
 - c. Unzip the folder and double-click on the **pwxplore.msi** file to begin the installation.
2. Define HDR Datasources via the ProjectWise V8i Network Tool
 - a. In the Windows Control Panel, double-click the ProjectWise V8i Network icon.
 - b. Select the **DNS Services** tab
 - Complete the fields using the name “accesspw.hdrinc.com” and then click the “Add” button then Apply to update your configuration.
 - c. Select the **Datasource Listing** tab
 - Complete the fields using the name “accesspw.hdrinc.com” and then click the “Add” button then Apply to update your configuration.

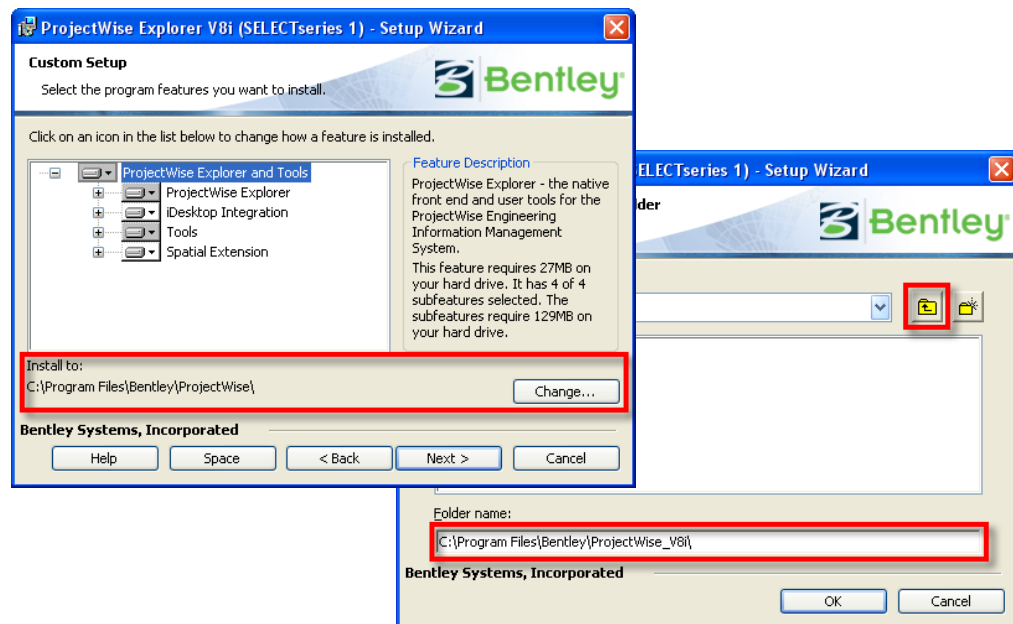
INSTALLATION PROCEDURE

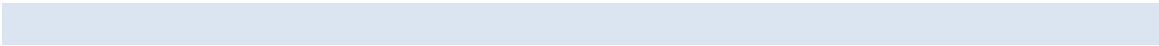
1. Click the ProjectWise Explorer V8i link from <http://www.hdrinc.com/12/53/2/default.aspx> and save the **pwxplore.zip** file to your Desktop.
2. After the download is complete, extract the contents of the zip file to a location of your choice.
3. In the extracted location, double-click **pwxplore.msi** to start the ProjectWise Explorer V8i (SELECTseries 1) – Setup Wizard then click Next to continue.
4. Choose **I Accept the terms of the license agreement** then select **Next** to continue.
5. Choose **Custom** then select **Next** to continue.
6. Verify the **Install to:** location is set to a folder named **..\Program Files\Bentley\ProjectWise**.

IMPORTANT: If you already have another version of ProjectWise installed on your machine and you require its use for the I-15 CORE Project or another non-HDR ProjectWise system, you will need to create an isolated installation location for ProjectWise V8i. If you no longer require the use of an existing version of ProjectWise, uninstall the existing version prior to installing ProjectWise V8i.

If you need to install ProjectWise V8i to a different folder

- a. Select **Change**.
- b. Create a folder named ProjectWise_V8i then select **OK**>
- c. Click **Next** to continue.



7. Click **Install** to begin the installation.
 8. When “Setup Wizard Complete” is displayed, select **Finish** to exit the wizard.
 9. Connecting to HDR hosted ProjectWise Datasources
- 

CONNECTING TO HDR HOSTED PROJECTWISE DATASOURCES

HDR uses the ProjectWise networking tool for external user access to HDR ProjectWise Datasources. External access is defined as any computer that is not internal to the HDR network. Those computers will need to make the following configuration changes to access HDR’s ProjectWise system.

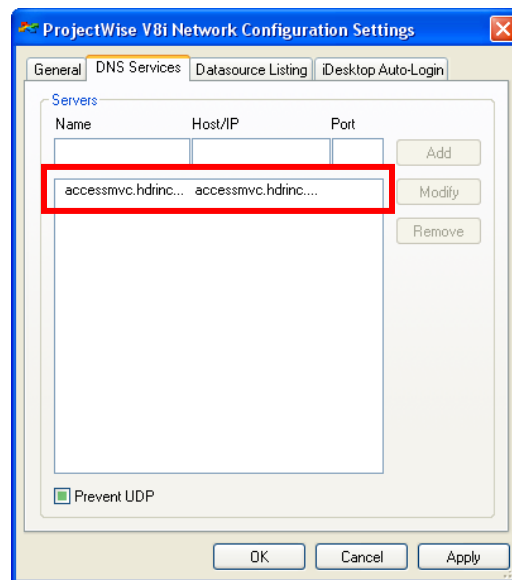
Note: These instructions are for Microsoft Windows XP only.

1. In the Windows Control Panel, double-click the “ProjectWise V8i Network” icon.

2. Enter the following in the DNS Service tab:

Name: **accessmvc.hdrinc.com**
Host/IP: **accessmvc.hdrinc.com**
Port: **<Leave Blank>**

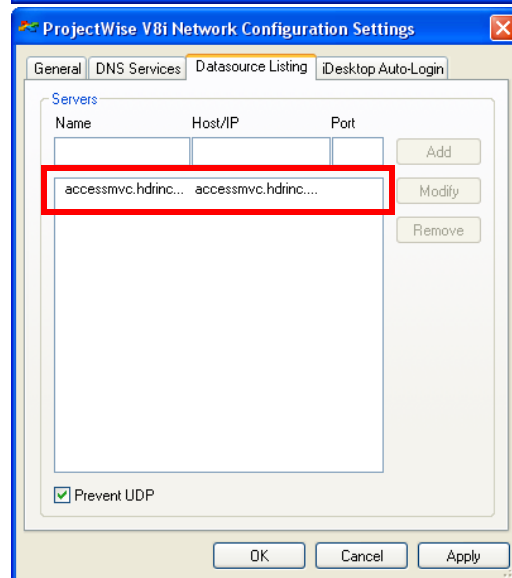
3. Click **Add**
4. Click **Apply**



5. Enter the following in the Datasource Listing:

Name: **accessmvc.hdrinc.com**
Host/IP: **accessmvc.hdrinc.com**
Port: **<Leave Blank>**

6. Click **Add**
7. Click **Apply**



8. Verify then entries were saved on the **DNS Services** and **Datasource Listing** tabs.

9. Click **OK** to close the dialog.

IDENTIFYING MT. VIEW CORRIDOR PROJECT DATASOURCE

The following list shows the current hosted Datasources at HDR. Access to each Datasource is provided on an individual basis. The Mt. View Corridor project Datasource is called "HDR_MVC".

Arch_Projects
California_Sacramento
HDR_MVC
National_Programs
NorthCentral_Omaha
NorthEast_Pittsburgh
NorthWest_Seattle
SouthEast_Tampa
SouthWest_Phoenix
Texas_Dallas
TTA