

# What's New in ProjectWise V8i for HDR

# What's new at a glance?

- [Performance Enhancements](#)
- [Windows “Like” Tools](#)
- [Enhanced Search Functions](#)
- [Photo Preview](#)
- [Redline, Navigator and View](#)
- [AutoCAD Enhancements](#)
- [Enhanced Reference Scanning](#)

---

## Performance Enhancements

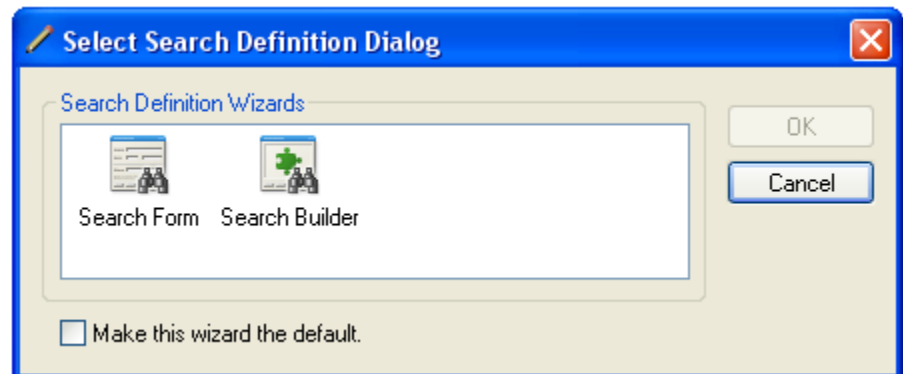
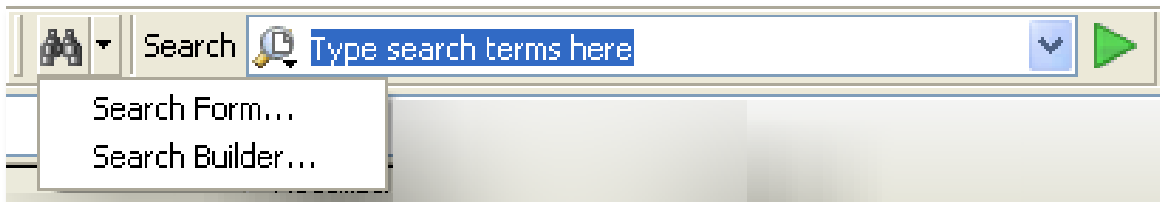
- **Delta File Transfer speeds transfer of many file types by copying only the changed portion of supported files**
- **Data Compression speeds up communication between ProjectWise Explorer and the ProjectWise server**

## Windows “Like” Tools

- **Familiar Windows command behavior for Ctrl+X, Ctrl+C and Ctrl+V**
- **Back and Forward navigation buttons**
- **Ability to stop file transfers**
- **Auto-login for integrated applications**

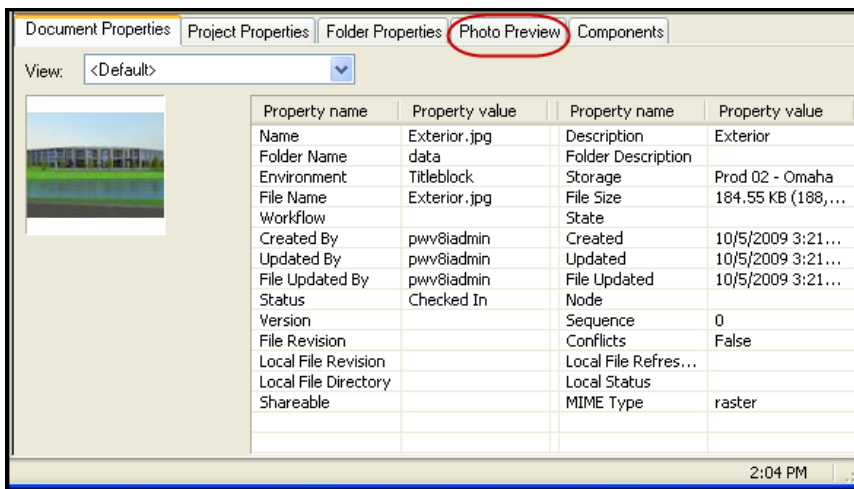
# Enhanced Search

- “Google-style” Quick Search
- Advanced search uses familiar dialogs from ProjectWise XM for more complex searches



# Photo Preview

- Photo Preview tab displays the image and provides navigation controls
- Photo Preview requires the file to be downloaded to the working directory



**Note:** Unlike thumbnails, Photo Preview **copies the entire image file to the local working directory**. As a result, **large files may take a very long time to preview**. If the Photo Preview tab is selected, any file that is selected in ProjectWise Explorer will be copied to the local working directory and previewed.

---

## Redline, Navigator and View

- Bentley Redline is being replaced with ProjectWise Navigator
- Bentley View V8i can be used to view CAD files stored in ProjectWise
- Use of ProjectWise Navigator and Bentley View V8i are included as part of Bentley's ProjectWise licensing scheme
- Quick View utility no longer distributed by Bentley

## AutoCAD Enhancements

- Sheet Set Manager integration
- Support for AutoCAD data links
- ProjectWise Session File Manager
- Integration support for Autodesk Vertical Applications

# Enhanced Reference Scanning

- New ways to access Scan Reference utility

