

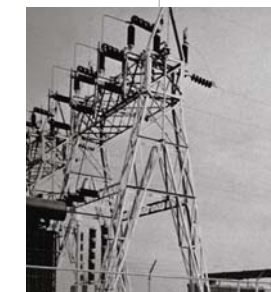


1917 - H.H. Henningson establishes Henningson Engineering Company in Omaha, designing water and sewer systems for new cities and towns throughout the Midwest.

1917 - 1 Office, 12 Employees



1930s - Henningson played a major role in organizing most of the public power districts across Nebraska under the Rural Electrification Act, serving as designer and also contractor on some projects.



1927 - 1 Office, 24 Employees

1936 - Young electrical engineer Willard A. Richardson went to work for Henningson.



1937 - 1 Office, 40 Employees

1938 - Iowa State student Charles W. Durham started with the firm during his summer vacation.



1940 - Henningson Engineering relocated to a larger building in Omaha and designed a winter training camp for the Quartermaster Corps' Triangular Division and 20,000 other troops at West Yellowstone, Mont.

1947 - 1 Office, 50 Employees

1946 - Henningson offered Charles Durham and Willard Richardson each one-third interest in his business, making Henningson the president, Durham the vice president, and Richardson the secretary-treasurer.

1954 - HDR employed 75 people, and recorded annual revenues of nearly \$250,000.



1957 - 2 Offices, 215 Employees

1950 - Henningson Engineering became known officially as Henningson, Durham & Richardson, Inc. Durham was named president and Richardson vice president. Henningson retired in 1953.

1955 - HDR expanded capabilities to provide total in-house service to clients, and organized an architectural department.



1960s - Two small engineering projects for Nebraska hospitals signaled the firm's entry into the healthcare facility design field, followed by the first major medical facility commission, the new Nebraska Methodist Hospital in Omaha.



1967 - 5 Offices, 244 Employees

1961 - HDR moved into new headquarters at Kiewit Plaza in Omaha.

1977 - 18 Offices, 771 Employees

1970 - With more than 300 employees, HDR staff outgrew the Kiewit office space. New headquarters on Indian Hills Drive in Omaha were completed in January 1972.



1976 - Healthcare expertise led to further international expansion with the \$1.4 billion King Abdulaziz University in Jeddah, Saudi Arabia.



1987 - 37 Offices, 1,182 Employees

1980s - New services included recycling, landfill and materials recovery. The company continued expansion of U.S. offices and core services in transportation, environmental and resource management, water, healthcare, science and technology, and civic.



1997 - 39 Offices, 1,713 Employees

1996 - HDR purchased the company from Bouygues, returning the firm to U.S. ownership.



1992 - HDR celebrated its 75th anniversary and was ranked among the top 50 A-E firms nationally.



2000 - HDR expanded alternative delivery services such as design-build and architecture services such as interiors. The firm won three large program management assignments in Arizona, Missouri and Texas.



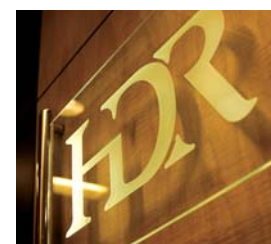
2001 - HDR was part of a design-build team awarded renovation of Wedges 2-5 of the Pentagon. Wedge 1 was complete and Wedge 2 was undergoing work on September 11, 2001.



2001 - An HDR-led design team won the contract to design the Hoover Dam Bypass project for the Central Federal Lands Highway Division of the Federal Highway Administration.



2002 - HDR celebrated 85 years with the publication of HDR Perspectives, Vol. 1-4, highlighting the company's dynamic history of engineering and architectural accomplishments.



2004 - HDR completed repurchase of company stock two years ahead of schedule and was now entirely employee-owned.



2005 - Engineering and Architecture reorganized operations into regional formats to help manage HDR's growth. The company reached all-time highs in staff count, revenues and offices.



2007 - HDR celebrates its 90th anniversary with 145 offices and 6,236 employees.



2008 - CUH2A joins HDR, creating the most comprehensive science+technology design firm in the world.



2009 - HDR continues growth via acquisition by adding Devine Tarbell & Associates (alternative energy/hydropower), e2M (environmental science and engineering), G+G Partnership Architects (healthcare, research facilities) and iTRANS Consulting (transportation planning and engineering).

2010 - HDR's Gills Onions Advanced Energy Recovery System project wins the prestigious Grand Conceptor Award from the American Council of Engineering Companies.



10

20

30

40

50

60

70

80

90

00

10