



Novartis Shanghai Campus

Animal Facility Design Work, Phase I

Shanghai, China

PROJECT DETAILS

Project Cost: Confidential

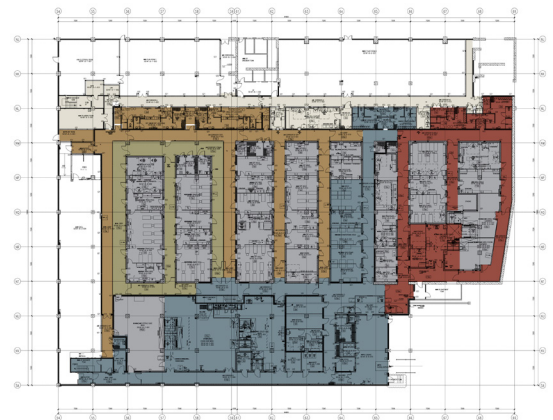
Size: 35,000 SF/3,250 m²

Professional Services:
Architecture, Engineering and Planning

Space Components:
Laboratory and office spaces, auditorium, amenity and vivaria

China Novartis Institutes for Biomedical Research (CNIBR) is developing an R&D campus in Shanghai's Zhang Jiang Hi-Tech Park. Upon completion, the campus will support 2,400 scientists and support staff with laboratory and office buildings, animal facilities, an energy center, auditoriums, cafés, and other amenities.

As a part of this effort, Novartis is developing a below-grade Animal Facility. This research and development laboratory will conduct studies on animals to develop an understanding of animal disease mechanisms. In turn, this research will inform modifications made to the properties of potential drugs, including the efficacy, metabolism, and toxicity of these drugs.



01 Section